

Instruction Sheet

Important: Read all instructions prior to installation.

Wi-Fi LED Controller Hub Setup

This Wi-Fi LED Controller Hub is compatible with all TC4 series 2.4Ghz RF LED Controllers from ledgloeilamp.nl. After completing this simple setup using just your smartphone or tablet and your existing or new LED lights and Wi-Fi compatible LED controller, you can have complete Wi-Fi control of all of your LED lights in your home.

Parts Included

- 1 - Wi-Fi LED Controller Hub
- 1 - USB Cord
- 1 - Free Wireless Device App (download)

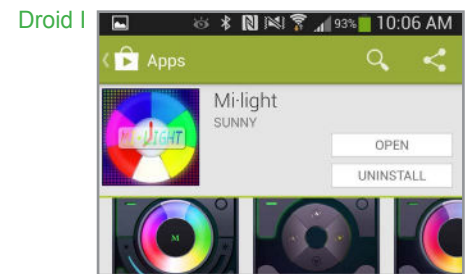
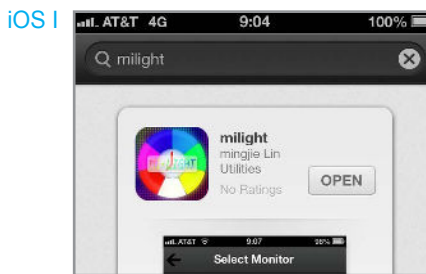


Instructions iOS

Instructions Droid

- I. Search "milight" from your iOS device App Store {[iOS I](#)}, or search "mi light" from your android device App store {[Droid I](#)}. Download and install the free app.
- II. Plug in Wi-Fi LED Controller Hub to computer USB port or a USB power adapter (as standalone unit) with included USB cord. (5VDC, 500mA)
- III. Connect smart device to Wi-Fi LED Controller Hub network. Go to your smart device Wi-Fi settings, you will see a new Wi-Fi network available called "milight" (this is the default network name of the Wi-Fi LED Controller Hub). Select "milight" and connect to it. {[iOS III](#)} {[Droid III](#)}

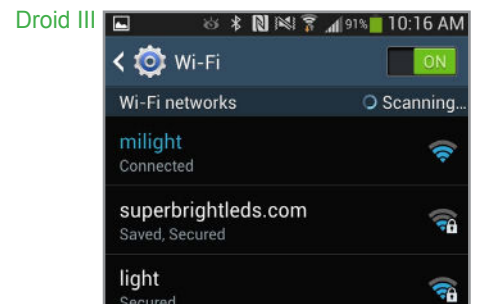
- IV. Run the "milight" app on your smart device when finished installing.



- V. Open the "milight" app. Opening the app for the first time will direct you to the "Device List" setup.

Select "milight" to connect to the wifi hub, device must be connectable (blue with checkmark).

Refresh device list if "milight" is not connectable.



Important

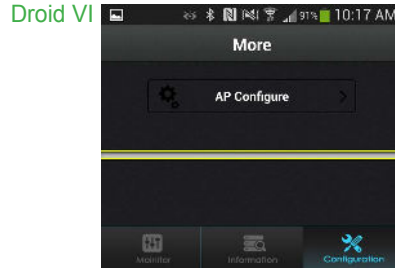
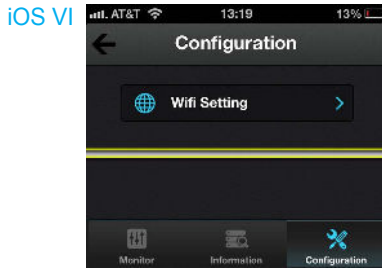
*Continue to step VI. if using WIFI-CON Wi-Fi LED Controller Hub and LED lights with your existing wireless home network. This method will allow the user to use their existing home Wi-Fi network and also wirelessly access and control your LEDs at the same time.

*Skip to step IX. if using WIFI-CON Wi-Fi LED Controller Hub as a standalone wireless router to control your LED lights. If the same smart device connects to your home Wi-Fi network, you will need to switch to the "milight" network to control the LEDs.

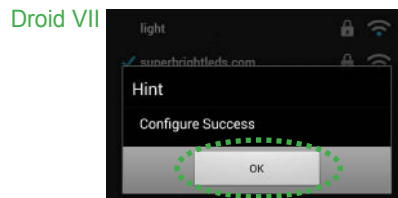
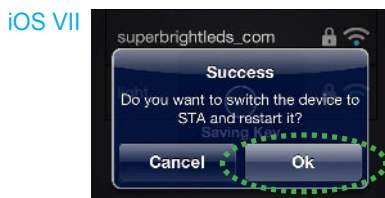
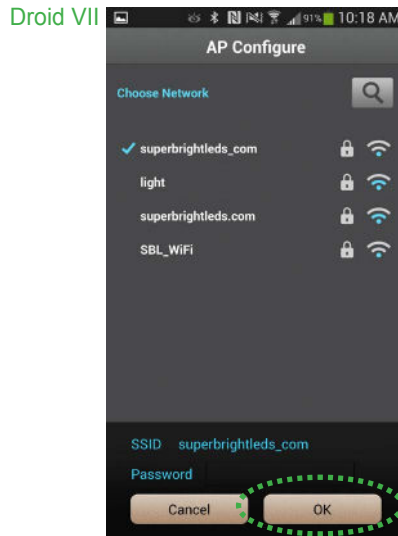
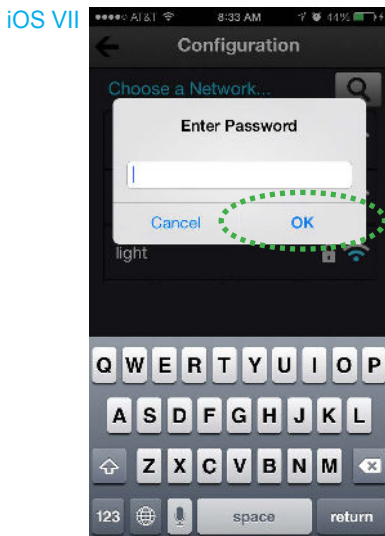


Instructions Cont. 1

VI. Select "Configuration" located at bottom right on screen. Continue by selecting "Wifi Setting" on iOS device or "AP Configure" on android device. {iOS VI} {Droid VI}

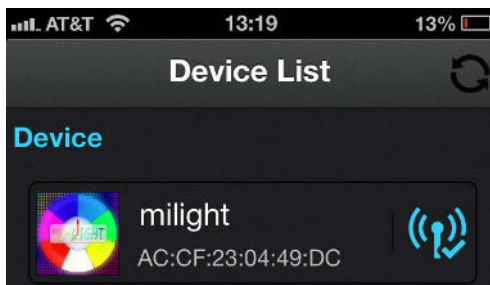


VII. The next screen will display all in-range Wi-Fi networks. Select your Wi-Fi network and enter the Wi-Fi password for that network. Then select "OK" to enter password and "OK" again to complete configuration. {iOS VII} {Droid VII}



VIII. After configuration is complete, the setup will take you back to the Device List. Refresh list and wait for your Wi-Fi LED Controller Hub to appear active (blue with checkmark) on the Device List. Select the "milight" device to connect.

Refresh device list if "milight" is not connectable.



Instructions Cont. 2

IX. On "Select Monitor" page, select the interface that matches your LED controller. See example below.



X. Continue to "Sync Smart Device" to sync your smart device with your Wi-Fi LED Controller Hub.

Sync Smart Device

The Wi-Fi LED Controller Hub requires smart device to strips/bulbs (ex. E27RF-RGB6-TC4) pairing to begin initial operation and to help eliminate interference from other nearby units.

If you wish to control several strips/bulbs from a single smart device, the LED lights (strips/bulbs) first must be synced to the Wi-Fi LED Controller Hub.

Sync-ing Procedure:

1. Power all compatible LED lights (strips or bulbs), to an outlet or socket controlled by a switch. Turn power to socket or outlet off. If there is no externally controlled switch to outlet, unplug LED lights from power source.
2. With the power off, grab the smart device, and have app opened to your specific controller's interface (or "monitor"). See step IX. for reference.
3. Switch on power to bulbs or strips or plug in power source if your set up does not have a switch.
4. Within 3 seconds of connecting power, press controller's sync button once on smart device. (ex. E27RF-RGB6-TC4)

If sync procedure was successful any connected light strips or bulbs should blink twice slowly and remote will immediately be functional.



Safety

- DO NOT connect controller directly to 120V AC power. This controller requires a 5V DC power adaptor or USB port to power unit.
- Only use the adaptor supplied; using a different adaptor can damage the device.
- Be sure the power supply is not plugged into an outlet before connecting or disconnecting any of the systems components.
- DO NOT expose the controller to direct or indirect moisture.
- Always observe proper polarity when connecting power and load.
- For safety reasons, do not open device, which will also void the warranty
- DO NOT expose the controller to direct or indirect moisture.